

UHV Flanges



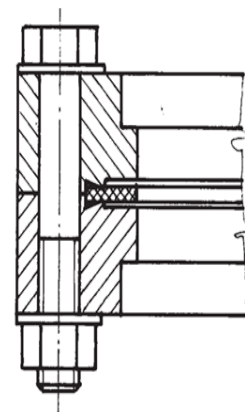
UHV flanges are available blank, rotary and welding type, with the following nominal diameters: NW 16÷25÷38÷50÷63÷80÷100÷125÷150÷200÷250÷275÷300÷350. The metal seal consists in a flat copper gasket tightened between a couple of stainless steel flanges. The force of the edges causes the radial sliding of the gasket limited by the vertical edges of the flange. In this way a perfect vacuum seal (10^{-12} mbar) is granted at high temperatures too (450° C).

- UHV Flange CONFLAT® compatible and similar

- OFHC metal copper seal Temperature up to 450° C

- Viton® Temperature up to 200° C

- Material AISI 304 L - AISI 316 L

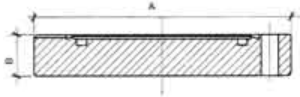


Aisi 304 CF blind flange

DN-KF	A	B	C	D	Code
CF 16	34	7,2	-	-	0600
CF25	54	13	-	-	0600-25

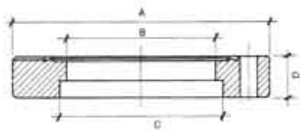
CF35/40	70	13	-	-	0601
CF50	86	18	-	-	0601-50
CF63	113	17,5	-	-	0602
CF75	117	19	-	-	0602-80
CF100	152	20	-	-	0603
CF125	171	21	-	-	6603
CF150	202	22,5	-	-	0604
CF200	253	24,5	-	-	0605
CF250	306	26	-	-	0606
CF275	336	28	-	-	0609
CF300	355	28	-	-	0607
CF350	419	28	-	-	0608

Aisi 316 CF blind flange



DN-KF	A	B	C	D	Code
CF 16	34	7,2	-	-	0600-316
CF25	54	13	-	-	0600-25-316
CF35/40	70	13	-	-	0601-316
CF50	86	18	-	-	0601-50-316
CF63	113	17,5	-	-	0602-316
CF75	117	19	-	-	0602-80-316
CF100	152	20	-	-	0603-316
CF125	171	21	-	-	6603-316
CF150	202	22,5	-	-	0604-316
CF200	253	24,5	-	-	0605-316
CF250	306	26	-	-	0606-316
CF275	336	28	-	-	0609-316
CF300	355	28	-	-	0607-316
CF350	419	28	-	-	0608-316

Aisi 304 CF soldering flange



DN-KF	A	B	C	D	Code
CF16	34	16	18	7,2	0610
CF25	54	21	25,4	13	0610-25
CF35	70	35	38	13	0611-38
CF38	70	38	42,4	13	0611
CF40	70	40,5	44,5	13	0611-44
CF50	85	48	50,8	17,5	0611-50
CF63	113	63	70,5	17,5	0612
CF75	117	72	76,5	19	0612-80
CF100	152	100	104,5	20	0613
CF100	152	102	108	20	0613-108
CF125	171	123,7	127,3	21	6613
CF150	202	150	154,5	22,5	0614
CF200	253	200	205,3	24,5	0615
CF200	253	200	206,5	24,5	0615-206
CF250	306	250	254,5	26	0616
CF250	306	250	256,3	26	0616-256
CF275	336	267	273,5	28	0619
CF300	355	300	305,5	28	0617
CF350	419	350	356,5	28	0618

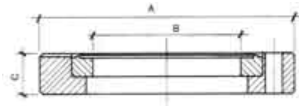
Aisi 316 CF soldering flange



DN-KF	A	B	C	D	Code
CF16	34	16	18	7,2	0610-316
CF25	54	21	25,4	13	0610-25-316
CF35	70	35	38	13	0611-38-316
CF38	70	38	42,4	13	0611-316
CF40	70	40,5	44,5	13	0611-44-316
CF50	85	48	50,8	17,5	0611-50-316
CF63	113	63	70,5	17,5	0612-316

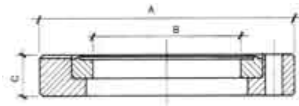
CF75	117	72	76,5	19	0612-80-316
CF100	152	100	104,5	20	0613-316
CF100	152	102	108	20	0613-108-316
CF125	171	123,7	127,3	21	6613-316
CF150	202	150	154,5	22,5	0614-316
CF200	253	200	205,3	24,5	0615-316
CF200	253	200	206,5	24,5	0615-206-316
CF250	306	250	254,5	26	0616-316
CF250	306	250	256,3	26	0616-256-316
CF275	336	267	273,5	28	0619-316
CF300	355	300	305,3	28	0617-316
CF350	419	350	356,5	28	0618-316

Aisi 304 soldering revolving flange



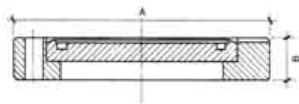
DN-KF	A	B	C	D	Code
CF16	34	16	7,2	-	0620
CF25	54	21	13	-	0620-25
CF35	70	35	13	-	0621-38
CF38	70	38	13	-	0621
CF40	70	40,5	13	-	0621-44
CF50	85	48	17,5	-	0621-50
CF63	113	63	17,5	-	0622
CF75	117	72	19	-	0622-80
CF100	152	100	20	-	0623
CF125	171	123,7	21	-	6623
CF150	202	150	22,5	-	0624
CF200	253	200	24,5	-	0625
CF250	306	250	26	-	0626
CF275	336	267	28	-	0629
CF300	355	300	28	-	0627
CF350	419	350	28	-	0628

Aisi 316 CF soldering revolving flange



DN-KF	A	B	C	D	Code
CF16	34	16	7,2	-	0620-316
CF25	54	21	13	-	0620-25-316
CF35	70	35	13	-	0621-38-316
CF38	70	38	13	-	0621-316
CF40	70	40,5	13	-	0621-44-316
CF50	85	48	17,5	-	0621-50-316
CF63	113	63	17,5	-	0622-316
CF75	117	72	19	-	0622-80-316
CF100	152	100	20	-	0623-316
CF125	171	123,7	21	-	6623-316
CF150	202	150	22,5	-	0624-316
CF200	253	200	24,5	-	0625-316
CF250	306	250	26	-	0626-316
CF275	336	267	28	-	0629-316
CF300	355	300	28	-	0627-316
CF350	419	350	28	-	628-316

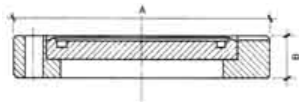
Aisi 304 CF blind revolving flange



DN-KF	A	B	C	D	Code
CF16	34	7,2	-	-	0650
CF25	54	13	-	-	0650-25
CF35/40	70	13	-	-	0651
CF50	85	17,5	-	-	0651-50
CF63	113	17,5	-	-	0652
CF75	117	19	-	-	0652-80
CF100	152	20	-	-	0653
CF125	171	21	-	-	6653

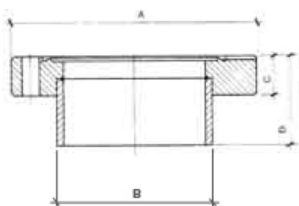
CF150	202	22	-	-	0654
CF200	253	24,5	-	-	0655
CF250	306	26	-	-	0656
CF275	336	28	-	-	0659
CF300	355	28	-	-	0657
CF350	419	28	-	-	0658

Aisi 316 CF blind revolving flange



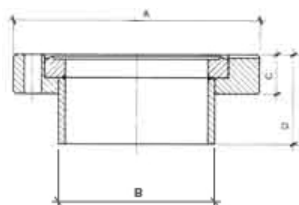
DN-KF	A	B	C	D	Code
CF16	34	7,2	-	-	0650-316
CF25	54	13	-	-	0650-25-316
CF35/40	70	13	-	-	0651-316
CF50	85	17,5	-	-	0651-50-316
CF63	113	17,5	-	-	0652-316
CF75	117	19	-	-	0652-80-316
CF100	152	20	-	-	0653-316
CF125	171	21	-	-	6653-316
CF150	202	22	-	-	0654-316
CF200	253	24,5	-	-	0655-316
CF250	306	26	-	-	0656-316
CF275	336	28	-	-	0659-316
CF300	355	28	-	-	0657-316
CF350	419	28	-	-	0658-316

Aisi 304 CF flange with tube



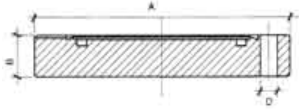
DN-KF	A	B	C	D	Code
CF16	34	18	7,2	35	0630
CF25	54	25	13	60	0630-25
CF35	70	38	13	60	0631-38
CF38	70	42.4	13	60	0631
CF40	70	44.5	13	60	0631-44
CF50	85	50.8	17,5	80	0631-50
CF63	113	70	17,5	80	0632
CF75	117	76	19	90	0632-80
CF100	152	104	20	90	0633
CF125	171	127	21	90	6633
CF150	202	154	22,5	100	0634
CF200	253	205	24,5	120	0635
CF250	306	256	26	150	0636
CF275	336	273	28	200	0639
CF300	355	305	28	250	0637
CF350	419	356	28	250	0638

Aisi 304 CF revolving flange with tube



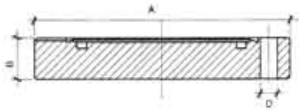
DN-KF	A	B	C	D	Code
CF16	34	18	7,2	35	0640
CF25	54	25	13	60	0640-25
CF35	70	38	13	60	0641-38
CF38	70	42.4	13	60	0641
CF40	70	44.5	13	60	0641-44
CF50	85	48	17,5	80	0641-50
CF63	113	70	17,5	80	0642
CF75	117	76	19	90	0642-80
CF100	152	104	20	90	0643
CF125	171	127	21	90	6643
CF150	202	154	22,5	100	0644
CF200	253	205	24,5	120	0645
CF250	306	256	26	150	0646
CF275	336	273	28	200	0649
CF300	355	305	28	250	0647
CF350	419	356	28	250	0648

Aisi 304 threaded CF blind flange



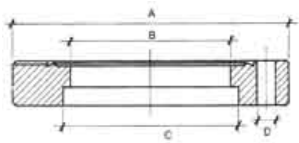
DN-KF	A	B	C	D	Code
CF16	34	7,2	-	M4	0600M4
CF25	54	13	-	M6	0600-25-M6
CF35/40	70	13	-	M6	0601M6
CF50	85	17,5	-	M6	0601-50-M8
CF63	113	17,5	-	M8	0602M8
CF75	117	19	-	M8	0602-80-M8
CF100	152	20	-	M8	0603M8
CF125	171	21	-	M8	6603M8
CF150	202	22,5	-	M8	0604M8
CF200	253	24,5	-	M8	0605M8
CF250	306	26	-	M8	0606M8
CF275	336	28	-	M10	0609M10
CF300	355	28	-	M10	0607M10
CF350	419	28	-	M10	0608M10

Aisi 316 CF threaded blind flange



DN-KF	A	B	C	D	Code
CF16	34	7,2	-	M4	0600M4-316
CF25	54	13	-	M6	0600-25-M6-316
CF35/40	70	13	-	M6	0601M6-316
CF50	85	17,5	-	M6	0601-50-M8-316
CF63	113	17,5	-	M8	0602M8-316
CF75	117	19	-	M8	0602-80-M8-316
CF100	152	20	-	M8	0603M8-316
CF125	171	21	-	M8	6603M8-316
CF150	202	22,5	-	M8	0604M8-316
CF200	253	24,5	-	M8	0605M8-316
CF250	306	26	-	M8	0606M8-316
CF275	336	28	-	M10	0609M10-316
CF300	355	28	-	M10	0607M10-316
CF350	419	28	-	M10	0608M10-316

Aisi 304 CF threaded soldering flange



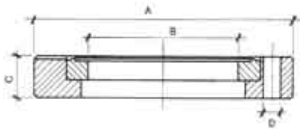
DN-KF	A	B	C	D	Code
CF16	34	16	18,1	M4	0610M4
CF25	54	21	25,4	M6	0610-25-M6
CF35	70	35	38	M6	0611M6-38
CF38	70	38	42,5	M6	0611M6
CF40	70	40	44,5	M6	0661M6-44
CF50	85	48	50,8	M6	0611-50-M8
CF63	113	63	70,5	M8	0612M8
CF75	117	72	76,5	M8	0612-80-M8
CF100	152	100	104,5	M8	0613M8
CF125	171	123,7	127,3	M8	6613M8
CF150	202	150	154,5	M8	0614M8
CF200	253	200	205,3	M8	0615M8
CF250	306	250	256,3	M8	0616M8
CF275	336	267	273,5	M10	0619M10
CF300	355	300	305,5	M10	0617M10
CF350	419	350	356,5	M10	0618M10

Aisi 316 CF threaded soldering flange

DN-KF	A	B	C	D	Code
CF16	34	16	18,1	M4	0610M4-316
CF25	54	21	25,4	M6	0610-25-M6-316
CF35	70	35	38	M6	0611M6-38-316

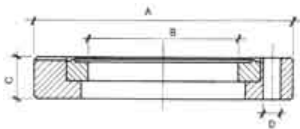
CF38	70	38	42,5	M6	0611M6-316
CF40	70	40	44,5	M6	0661M6-44-316
CF50	85	48	50,8	M6	0611-50-M8-316
CF63	113	63	70,5	M8	0612M8-316
CF75	117	72	76,5	M8	0612-80-M8-316
CF100	152	100	104,5	M8	0613M8-316
CF125	171	123,7	127,3	M8	6613M8-316
CF150	202	150	154,5	M8	0614M8-316
CF200	253	200	205,3	M8	0615M8-316
CF250	306	250	256,3	M8	0616M8-316
CF275	336	267	273,5	M10	0619M10-316
CF300	355	300	305,5	M10	0617M10-316
CF350	419	350	356,5	M10	0618M10-316

Aisi 304 CF threaded revolving soldering flange



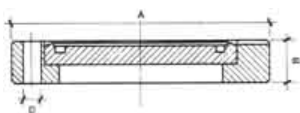
DN-KF	A	B	C	D	Code
CF16	34	16	7,2	M4	0620M4
CF25	54	21	13	M6	0620-25-M6
CF35	70	35	13	M6	0621M6-38
CF38	70	38	13	M6	0621M6
CF40	70	40	13	M6	0621M6-44
CF50	85	48	13	M6	0621-50-M8
CF63	113	63	17,5	M8	0622M8
CF75	117	72	19	M8	0622-80-M8
CF100	152	100	20	M8	0623M8
CF125	171	123,7	21	M8	6623M8
CF150	202	150	22,5	M8	0624M8
CF200	253	200	24,5	M8	0625M8
CF250	306	250	26	M8	0626M8
CF275	336	267	28	M10	0629M10
CF300	355	300	28	M10	0627M10
CF350	419	350	28	M10	0628M10

Aisi 316 CF threaded revolving soldering flange



DN-KF	A	B	C	D	Code
CF16	34	16	7,2	M4	0620M4-316
CF25	54	21	13	M6	0620-25-M6-316
CF35	70	35	13	M6	0621M6-38-316
CF38	70	38	13	M6	0621M6-316
CF40	70	40	13	M6	0621M6-44-316
CF50	85	48	13	M6	0621-50-M8-316
CF63	113	63	17,5	M8	0622M8-316
CF75	117	72	19	M8	0622-80-M8-316
CF100	152	100	20	M8	0623M8-316
CF125	171	123,7	21	M8	6623M8-316
CF150	202	150	22,5	M8	0624M8-316
CF200	253	200	24,5	M8	0625M8-316
CF250	306	250	26	M8	0626M8-316
CF275	336	267	28	M10	0629M10-316
CF300	355	300	28	M10	0627M10-316
CF350	419	350	28	M10	0628M10-316

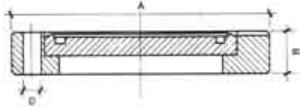
Aisi 304 CF threaded revolving blind flange



DN-KF	A	B	C	D	Code
CF16	34	7,2	-	M4	0650M4
CF25	54	13	-	M6	0650-25-M6
CF35/40	70	13	-	M6	0651M6
CF50	85	13	-	M6	0651-50-M8
CF63	113	17,5	-	M8	0652M8
CF75	117	19	-	M8	0652-80-M8
CF100	152	20	-	M8	0653M8

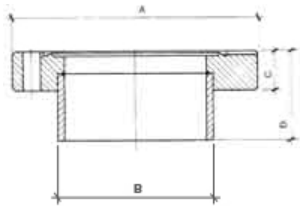
CF125	171	21	-	M8	6653M8
CF150	202	22	-	M8	0654M8
CF200	253	24,5	-	M8	0655M8
CF250	306	26	-	M8	0656M8
CF275	336	28	-	M10	0659M10
CF300	355	28	-	M10	0657M10
CF350	419	28	-	M10	0658M10

Aisi 316 CF threaded revolving blind flange



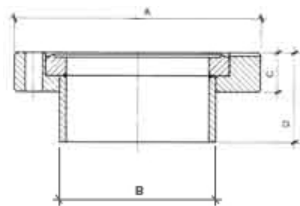
DN-KF	A	B	C	D	Code
CF16	34	7,2	-	M4	0650M4-316
CF25	54	13	-	M6	0650-25-M6-316
CF35/40	70	13	-	M6	0651M6-316
CF50	85	13	-	M6	0651-50-M8-316
CF63	113	17,5	-	M8	0652M8-316
CF75	117	19	-	M8	0652-80-M8-316
CF100	152	20	-	M8	0653M8-316
CF125	171	21	-	M8	6653M8-316
CF150	202	22	-	M8	0654M8-316
CF200	253	24,5	-	M8	0655M8-316
CF250	306	26	-	M8	0656M8-316
CF275	336	28	-	M10	0659M10-316
CF300	355	28	-	M10	0657M10-316
CF350	419	28	-	M10	0658M10-316

Aisi 304 CF threaded flange with tube



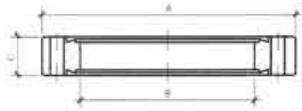
DN-KF	A	B	C	D	Code
CF16	34	16	7,2	35	0630M4
CF25	54	21	13	60	0630-25-M6
CF35	70	35	13	60	0631M6-38
CF38	70	38	13	60	0631M6
CF40	70	40	13	60	0631M6-44
CF50	85	48	13	80	0631-50-M8
CF63	113	63	17,5	80	0632M8
CF75	117	72	19	90	0632-80-M8
CF100	152	100	20	90	0633M8
CF125	171	123,7	21	90	6633M8
CF150	202	150	22,5	100	0634M8
CF200	253	200	24,5	120	0635M8
CF250	306	250	26	150	0636M8
CF275	336	267	28	250	0639M10
CF300	355	300	28	250	0637M10
CF350	419	350	28	250	0638M10

Aisi 304 CF threaded revolving flange with tube



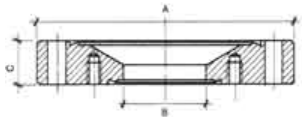
DN-KF	A	B	C	D	Code
CF16	34	16	7,2	35	0640M4
CF25	54	21	13	60	0640-25-M6
CF35	70	35	13	60	0641M6-38
CF38	70	38	13	60	0641M6
CF40	70	40	13	60	0641M6-44
CF50	85	48	13	80	0641-50-M8
CF63	113	63	17,5	80	0642M8
CF75	117	72	19	90	0642-80-M8
CF100	152	100	20	90	0643M8
CF125	171	123,7	21	90	6643M8
CF150	202	150	22,5	100	0644M8
CF200	253	200	24,5	120	0645M8
CF250	306	250	26	150	0646M8
CF275	336	267	28	250	0649M10
CF300	355	300	28	250	0647M10

Aisi 304 CF double face flange



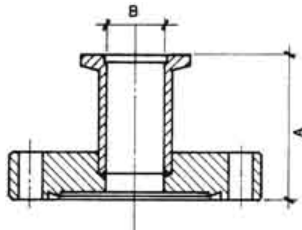
DN-KF	A	B	C	D	Code
CF16	34	16	7,2	-	5610
CF38	70	38	13	-	5611
CF63	113	63	17,5	-	5612
CF100	152	100	20	-	5613
CF150	202	150	22,5	-	5614
CF200	253	200	24,5	-	5615
CF250	306	250	26	-	5616

Aisi 304 CF zero level reduction



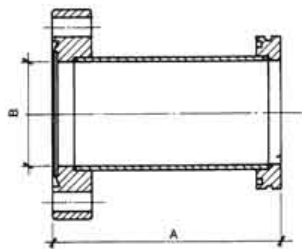
DN-KF	A	B	C	D	Code
CF35/16	70	16	13	-	0660
CF63/38	113	16	17,5	-	0661
CF63/16	113	38	17,5	-	5661
CF100/38	152	38	20	-	0662
CF100/63	152	63	20	-	0663
CF150/35	202	35	22,5	-	0664
CF150/63	202	63	22,5	-	0665
CF150/100	202	100	22,5	-	0666
CF200/63	253	63	24,5	-	0667
CF200/100	253	100	24,5	-	0668
CF250/150	306	150	26	-	0669
CF300/200	356	200	28	-	6660

Aisi 304 CF / KF adapter



DN-KF	A	B	C	D	Code
CF16/KF10	40	10	-	-	0720
CF16/KF16	40	16	-	-	0721
CF38/KF10	40	10	-	-	0722
CF38/KF16	40	16	-	-	0723
CF38/KF25	40	24	-	-	0724
CF38/KF40	60	41	-	-	0725
CF63/KF40	60	41	-	-	0726
CF63/KF50	60	50	-	-	0727
CF100/KF40	60	41	-	-	0728
CF100/KF50	60	50	-	-	0729

Aisi 304 CF / ISO adapter



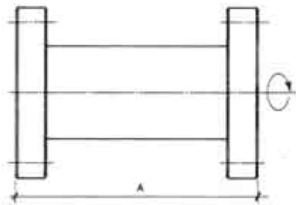
DN-KF	A	B	C	D	Code
CF63/ISO63	100	70	-	-	0730
CF100/ISO100	100	102	-	-	0731
CF150/ISO160	100	153	-	-	0732
CF200/ISO150	100	150	-	-	0735
CF250/ISO200	100	200	-	-	0736

Aisi 304 CF / CF reduction

DN-KF	A	B	C	D	Code
CF35/16	60	16	-	-	0710
CF63/25	95	25	-	-	5710
CF63/38	95	38	-	-	0711
CF100/38	110	38	-	-	0712

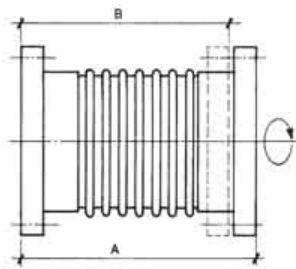
CF100/63	115	63	-	-	0713
CF150/100	120	100	-	-	0714
CF200/150	130	150	-	-	0715

Aisi 304 CF straight junction



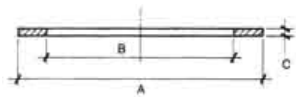
DN-KF	A	B	C	D	Code
CF16	76	-	-	-	0700
CF38	126	-	-	-	0701
CF63	210	-	-	-	0702
CF100	270	-	-	-	0703
CF150	334	-	-	-	0704
CF200	420	-	-	-	0705

Aisi 304 CF bellows



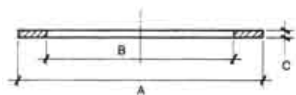
DN-KF	A	B	C	D	Code
CF16	90	100	-	-	0740
CF38	120	130	-	-	0741
CF63	130	150	-	-	0742
CF100	130	150	-	-	0743
CF150	130	180	-	-	0744
CF200	230	250	-	-	0745
CF250	250	250	-	-	0746

OFCH CF O-Ring



DN-KF	A	B	C	D	Code
CF16	21,3	16	-	-	0670
CF25	32,8	25,6	-	-	0670-25
CF35/40	48,1	39	-	-	0671
CF50	61,6	50,8	-	-	0671-50
CF63	82,4	64	-	-	0672
CF75	120,5	76	-	-	0672-80
CF100	120,5	101,7	-	-	0673
CF125	141	127	-	-	6673
CF150	171,3	152,7	-	-	0674
CF200	222,1	203,3	-	-	0675
CF250	273	254	-	-	0676
CF275	294	275	-	-	0679
CF300	313	300	-	-	0677
CF350	356,5	376,5	-	-	0678

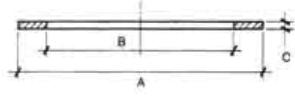
OFCH silver plated CF O-Ring



DN-KF	A	B	C	D	Code
CF16	21,3	16	-	-	SP0670
CF25	32,8	25,6	-	-	SP0670-25
CF35/40	48,1	39	-	-	SP0671
CF50	61,6	50,8	-	-	SP0671-50
CF63	82,4	64	-	-	SP0672
CF75	120,5	76	-	-	SP0672-80
CF100	120,5	101,7	-	-	SP0673
CF125	141	127	-	-	SP6673

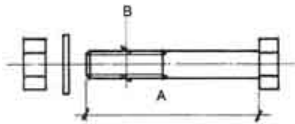
CF150	171,3	152,7	-	-	SP0674
CF200	222,1	203,3	-	-	SP0675
CF250	273	254	-	-	SP0676
CF275	294	275	-	-	SP0679
CF300	313	300	-	-	SP0677
CF350	356,5	376,5	-	-	SP0678

VITON® O-Ring



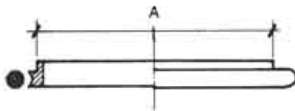
DN-KF	A	B	C	D	Code
CF16	21,3	16	-	-	V0670
CF25	32,8	25,6	-	-	V0670-25
CF35/40	48,1	39	-	-	V0671
CF50	61,6	50,8	-	-	V0671-50
CF63	82,4	64	-	-	V0672
CF75	120,5	76	-	-	V0672-80
CF100	120,5	101,7	-	-	V0673
CF125	141	127	-	-	V6673
CF150	171,3	152,7	-	-	V0674
CF200	222,1	203,3	-	-	V0675
CF250	273	254	-	-	V0676
CF275	294	275	-	-	V079
CF300	313	300	-	-	V0677
CF350	356,5	376,5	-	-	V0678

Aisi 304 bolts set



DN-KF	A	B	C	D	Code
CF16	20	M4	Nº 6	-	0690
CF25	20	M4	Nº 6	-	6690
CF35/40	35	M6	Nº 6	-	0691
CF50	35	M6	Nº 6	-	6691
CF63	50	M8	Nº8	-	0692
CF75	50	M8	Nº8	-	6692
CF100	55	M8	Nº16	-	0693
CF125	55	M8	Nº16	-	6693
CF150	55	M8	Nº20	-	0694
CF200	60	M8	Nº24	-	0695
CF250	60	M10	Nº32	-	0696
CF275	65	M10	Nº30	-	0699
CF300	65	M10	Nº30	-	0697
CF350	65	M10	Nº30	-	0698

Aluminium CF centering ring



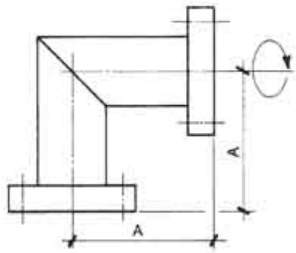
DN-KF	A	B	C	D	Code
CF50	50	-	-	-	6680
CF63	63	-	-	-	0681
CF75	75	-	-	-	6681
CF100	100	-	-	-	0682
CF125	125	-	-	-	6682
CF150	150	-	-	-	0683
CF200	200	-	-	-	0684
CF250	250	-	-	-	0685
CF275	275	-	-	-	0689
CF300	298	-	-	-	0686
CF350	350	-	-	-	0687

Aisi 304 CF flexible

DN-KF	A	B	C	D	Code
CF16	250	-	-	-	0750
CF16	500	-	-	-	0751

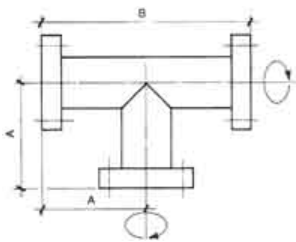
CF16	1000	-	-	-	0752
CF38	250	-	-	-	0753
CF38	500	-	-	-	0754
CF38	1000	-	-	-	0755
CF63	250	-	-	-	0756
CF63	500	-	-	-	0757
CF63	1000	-	-	-	0758
CF100	250	-	-	-	7756
CF100	500	-	-	-	7757
CF100	1000	-	-	-	7758

Aisi 304 CF angle junction



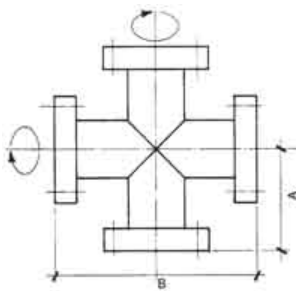
DN-KF	A	B	C	D	Code
CF16	38	-	-	-	0760
CF38	63	-	-	-	0761
CF63	105	-	-	-	0762
CF100	135	-	-	-	0763
CF150	167	-	-	-	0764
CF200	210	-	-	-	0765

Aisi 304 CF tee junction



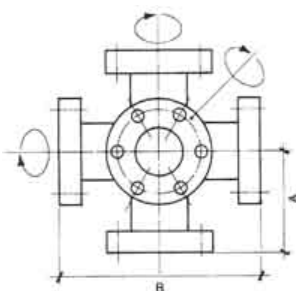
DN-KF	A	B	C	D	Code
CF16	38	76	-	-	0770
CF38	63	126	-	-	0771
CF63	105	210	-	-	0772
CF100	135	270	-	-	0773
CF150	167	334	-	-	0774
CF200	210	420	-	-	0775

Aisi 304 cross junction



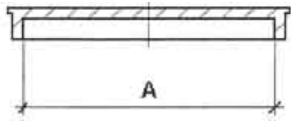
DN-KF	A	B	C	D	Code
CF16	38	76	-	-	0780
CF38	63	126	-	-	0781
CF63	105	210	-	-	0782
CF100	135	270	-	-	0783
CF150	167	334	-	-	0784
CF200	210	420	-	-	0785

Aisi 304 6 way cross junction



DN-KF	A	B	C	D	Code
CF16	38	76	-	-	0790
CF38	63	126	-	-	0791
CF63	105	210	-	-	0792
CF100	135	270	-	-	0793
CF150	167	334	-	-	0794
CF200	210	420	-	-	0795

PVC protection cap



DN-KF	A	B	C	D	Code
CF16	34	-	-	-	PVC-CF16
CF25	54	-	-	-	PVC-CF25
CF35/40	70	-	-	-	PVC-CF38
CF50	85	-	-	-	PVC-CF50
CF63	113	-	-	-	PVC-CF63
CF75	117	-	-	-	PVC-CF80
CF100	152	-	-	-	PVC-CF100
CF150	202	-	-	-	PVC-CF150
CF200	253	-	-	-	PVC-CF200

Streas srl Via A.Meucci n°5 20019 Settimo Milanese (MI) | Tel. 0248914530 | Fax. 0248915091 P.IVA 06323900156
