

Options and Spare Parts for Gloveboxes

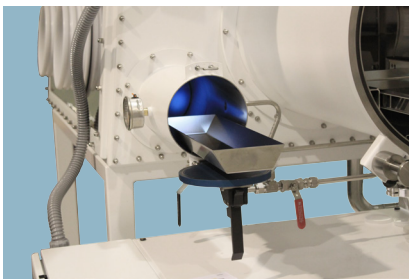


M. Braun offers a various range of options and spare parts for Gloveboxes:

- Antechambers
- Solvents Traps
- Dust Filters
- Analyzers
- Vacuum Ovens
- Feedthroughs

Antechambers

PART NUMBER	NAME	DESCRIPTION
Main antechambers		
1500205	MB-SCH-390-1T-L LM/MOD	Main antechamber left LM/MOD (390 mm diam. 600 mm length)
1500206	MB-SCH-390-1T-R LM/MOD	Main antechamber right LM/MOD (390 mm diam. 600 mm length)
1500207	MB-SCH-390-1T-L LS/UL	Main antechamber left LS/UL (390 mm diam. 600 mm length)
1500208	MB-SCH-390-1T-R LS/UL	Main antechamber right LS/UL (390 mm diam. 600 mm length)
Mini antechambers		
1500250	MB-MINI-AC-150-R	Mini antechamber right (150 mm diam. 400 mm length)
1500251	MB-MINI-AC-150-L	Mini antechamber left (150 mm diam. 400 mm length)
1500255	MB-MINI-AC-150-300-R	Mini antechamber (150 mm diam. 300 mm length)
1500256	MB-MINI-AC-150-300-L	Mini antechamber (150 mm diam. 300 mm length)
1500197	MB-BOTTOM-AC-150-400	Mini antechamber (150 mm diam. 400 mm length) mounted vertically
T-shaped antechambers		
1500209	MB-SCH-T-390-600-CYL	T-shaped antechamber (390 mm diameter, 600 mm length)
1500210	MB-SCH-T-390-800-CYL	T-shaped antechamber (390 mm diameter, 800 mm length)
1500211	MB-SCH-T-300-SQ	T-shaped square antechamber (300mm x 300mm, 600mm length)
L-shaped antechambers		
1500212	MB-SCH-L-300-SQ	L-shaped antechamber (300mm x 300 mm x 400)
Square antechambers		
1500213	MB-SCH-300-SQ	Square antechamber (300mm x 300mm, 400mm length)
1500214	MB-SCH-200-SQ	Square antechamber (200mm x 200mm, 400mm length)



Mini antechamber



Mini and main antechamber

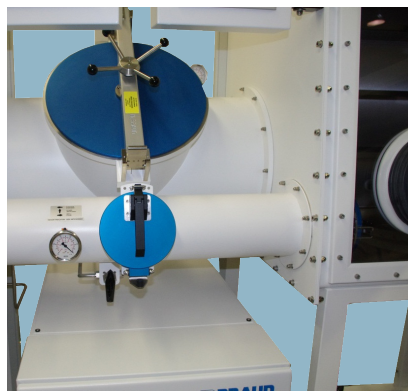


Mini and main antechamber

SPECIFIC ANTECHAMBERS AVAILABLE ON REQUEST:



L-shape box junction



T-shaped main and mini antechambers

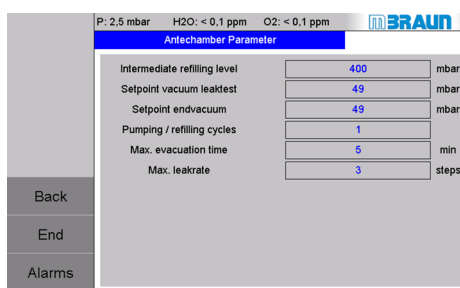


Large volume vacuum antechamber

Antechambers Control Options

FOR LABSTAR / UNILAB

PART NUMBER	NAME	DESCRIPTION
Mini antechamber option		
1500252	MB-AAC-MINI-AC	Time controlled evacuation / refill - No. of cycles for evacuation and refill - Evacuation (time controlled) - Intermediate refill (time controlled) - Refill to final pressure (time controlled)
Main antechamber options		
1500291	MB-AUTO-AC-TC-UNILAB	Time controlled evacuation / refill - No. of cycles for evacuation and refill - Evacuation (time controlled) - Intermediate refill (time controlled) - Refill to final pressure (time controlled)
1502051	MB-AC-VENT (manual)	The connected main antechamber is vented by fresh gas from the gas supply instead of refilling with gas from the glovebox.
1502053	MB-AC-PURGE (manual)	The connected main antechamber can be purged in overpressure with inert gas instead of using the standard vacuum process.
1500283	MB-SCH-PLC	Pressure controlled evacuation / refill, incl. 2 sensors (1 for atm. pressure, 1 for high vacuum pressure). Leak test function included. Programmable antechamber cycles: - No. of cycles - Intermediate vacuum for refill - Ultimate vacuum



FOR LABMASTER AND G SERIES PURIFICATION UNITS

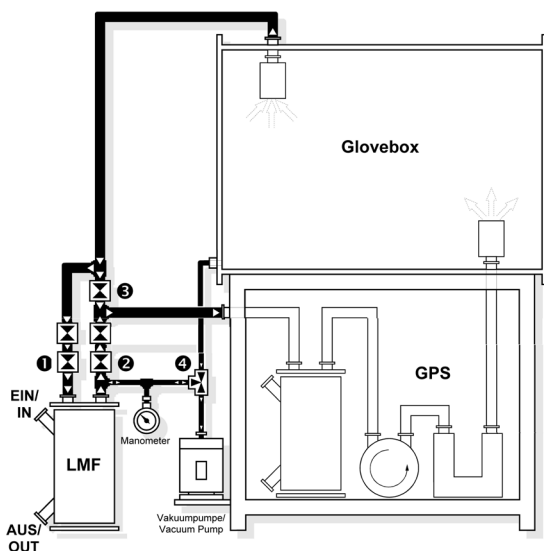
PART NUMBER	NAME	DESCRIPTION
Mini antechamber option		
1500252	MB-AAC-MINI-AC	Time controlled evacuation / refill - No. of cycles for evacuation and refill - Evacuation (time controlled) - Intermediate refill (time controlled) - Refill to final pressure (time controlled)
1500253	MB-AAC-LOCK-MINI-AC	Automatic Mini-antechamber control with door locks. PLC-controlled antechamber control unit including sensors and software. Ante chamber control, 2 doors including mechanical interlock for the antechamber or the oven to avoid failure of operation.
Main antechamber options		
1502052	MB-AC-VENT (PLC)	The connected antechamber is vented by fresh gas from the gas supply instead of refilling with gas from the glovebox, PLC controlled
1502054	MB-AC-PURGE (PLC)	The connected antechamber can be purged in overpressure with inert gas instead of using the standard vacuum process, PLC controlled.
1500283	MB-SCH-PLC	Pressure controlled evacuation / refill, incl. 2 sensors (1 for atm. pressure, 1 for high vacuum pressure). Leak test function included. Programmable antechamber cycles: - No. of cycles - Intermediate vacuum for refill - Ultimate vacuum
1500284	MB-SCH-PLC-2-DV	Antechamber control (1500283) + 2 doors including mechanical interlock for the antechamber or the oven to avoid failure of operation
1500285	MB-SCH-PLC-3-DV	Antechamber control (1500283) + 3 doors including mechanical interlock for the antechamber or the oven to avoid failure of operation
1500286	MB-SCH-PLC-2-DV-1PD	Antechamber control and interlock (1500284) + Automatic lifting mechanism for 1 door
1500287	MB-SCH-PLC-2DV-2PD	Antechamber control and interlock (1500284) + Automatic lifting mechanism for 2 doors
1500288	MB-SCH-PLC-3DV-2PD	Antechamber control and interlock (1500285) + Automatic lifting mechanism for 2 doors

Solvent Traps

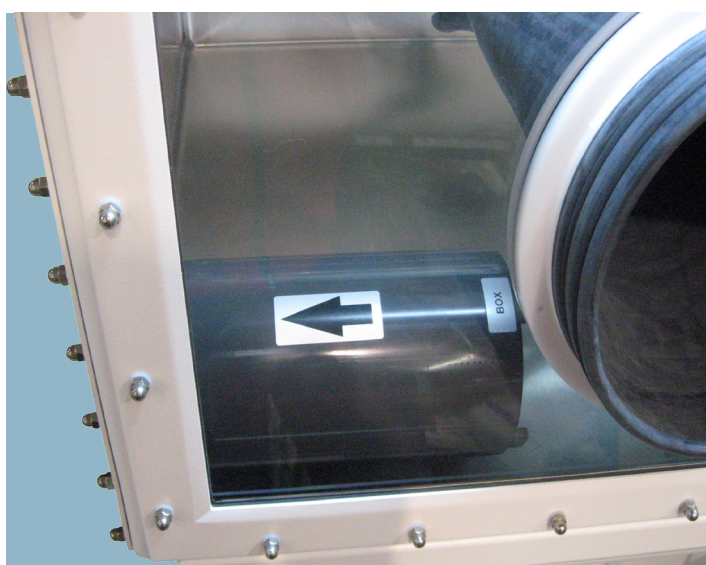
PART NUMBER	NAME	DESCRIPTION
9004451	MB-BF-BO1	Integrated into the glovebox, instead of the outlet dust filters: - Loading: Charcoal - Easy exchange of loading - Capacity*: 100 g solvent vapour - Integrated dust filter HEPA H13
1500326	MB-LMF	Integrated into the purifier unit or stand-alone: - Easy exchange of loading with bypass hand valves linked to the vacuum pump - Loading: Charcoal - Capacity*: 500 g solvent vapour
1500327	MB-LMF-REG	Integrated into the purifier unit: - Operation through the Touch panel - No need to change the load when saturated - Regeneration program PLC-operated - Loading: Molecular sieve - Capacity*: about 810 g solvent vapour
1500320	MB-LMF-2/40-REG stand alone	Standalone unit: - Regeneration program PLC-operated - Loading: Molecular sieve - Capacity*: about 810 g solvent vapour - Could be added to existing system
1500322	MB-LMF-MOV	High-capacity and movable unit, thanks to wheels for an easy exchange of the adsorber. - Adsorber: activated charcoal - Capacity*: about 800 g solvent vapour



Check the presence of solvents with the Solvent Sensor MB-HC-SE1



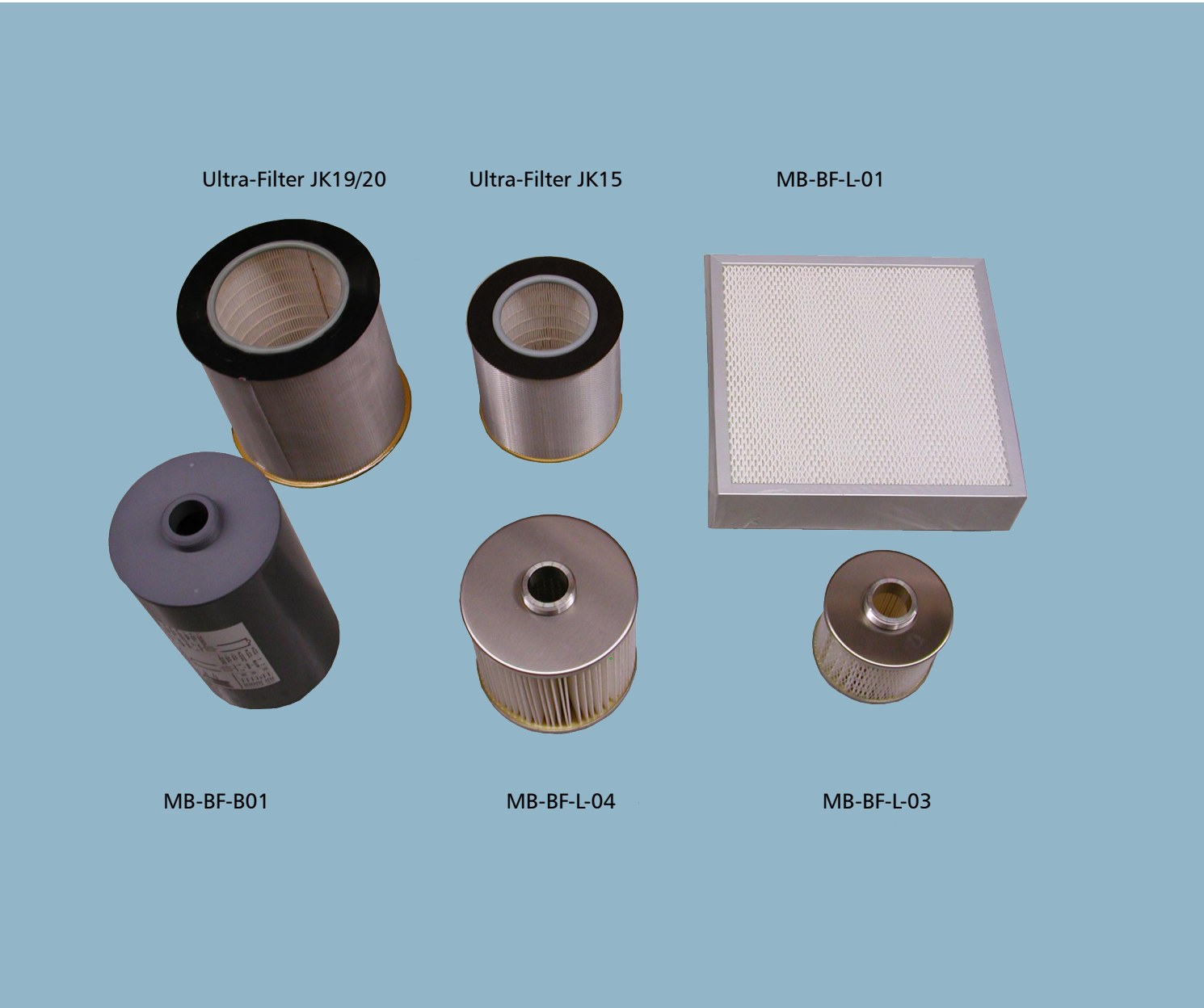
Solvent trap LMF



Solvent filter MB-BF-01

Dust Filters

PART NUMBER	NAME	DESCRIPTION
9004513	MB-BF-L-03	Standard dust filter for KF40 HEPA H13; type: cylindrical For gas inlet and outlet of M. Braun gloveboxes
2137001	MB-BF-L-04	Dust filter according class HEPA H13; type: cylindrical For gas inlet and outlet of M. Braun gloveboxes
3240077	MB-BF-L-01	Square large dust filter U15 HEPATEX H13; LUWA Ultra-filter Type CR-T, 305 x 305 x 70 mm (WxDxH)
7007292	Ultra-Filter JK15	LUWA Ultra-Filter JK15 (Filter cartridge)
3240399	Ultra-Filter JK19/20	LUWA Ultra-filter JK19/20; HEPA filter HEPATEX H13; D190x200 Type JK
9004451	MB-BF-BO1	Integrated into the glovebox, instead of the outlet dust filters: - Loading: Charcoal - Easy exchange of loading - Capacity*: 100 g solvent vapour - Integrated dust filter HEPA H13



Analyzers

PART NUMBER	NAME	DESCRIPTION
1500685	MB-MO-SE1-PLC	Moisture probe, PLC-controlled, measuring range: 0-500ppm, transducer, 0-10V output, 5m cable included
1500686	MB-OX-SE1-PLC	Oxygen probe, PLC-controlled, measuring range: 0-1000ppm, transducer, solid state device, 0-10V output, 5m cable included
1500687	MB-OX-SE3-PLC	Oxygen probe, PLC-controlled, measuring range: 0,5-25%, transducer, solid state device, 0-10V output, 5m cable included
1500716	MB-OX-EC-PLC	Electrochemical Oxygen analyzer Range: 1 to 1000 ppm Sensitivity: 10 mV / ppm (range 1) Accuracy: 2% of displayed value, +/- 1 ppm up to 1000 ppm Integrated in Gas circulation piping To be used when atmosphere is not dry or when a lot of solvent vapors are present
1500678	MB-HC-SE1	The MB-HC-SE1 analyzer is designed for the detection and monitoring of VOCs (volatile organic compounds) in inert gas or air. The output voltage signal is scaled 0-10V for 0 to 6000ppm ISO-Butene (optional 4-20mA output available). Mounted directly into the circulation piping using the standard KF40 flange.



Special Analyzers

PART NUMBER	NAME	DESCRIPTION
1500273	MB-UGP-CO2, 0-100%	Integrated analyzer, PLC-controlled, data display on PLC operation panel. CO2-analyzer with PLC-interface. Range: 0,1% to 100% in argon
1500274	MB-UGP-He in Ar, 0-30%	Integrated analyzer, PLC-controlled, data display on PLC operation panel. He-analyzer with PLC-interface. Range: 0,1% to 30% in argon
1500800	MB-UGP-He in N2, 0-20%	Oxygen probe, PLC-controlled, measuring range: 0,5-25%, transducer, solid state device, 0-10V output, 5m cable included
1500804	MB-H2-Ar, 0-1,5%	Working gas in the glove box: Argon The non-safety related sensor is intended to be used in combination with a MB BS-200 box purging function and a MB-OX-EC oxygen sensor. Automated box purging will start if the Hydrogen concentration exceed 1.5 % or the oxygen concentration exceeds 2 %. For a regular check of the sensor is a test gas connection available.
1500805	MB-H2-N2, 0-2,5%	Working gas in the glove box: Nitrogen The non-safety related sensor can be used only in combination with an MB BS-200 purging system and an MB-OX-EC oxygen sensor. Automated box purging will start if the Hydrogen concentration exceed 2,5 % or the oxygen concentration exceeds 2%. For a regular check of the sensor is a test gas connection available
1500678	MB-HC-SE1	The MB-HC-SE1 analyzer is designed for the detection and monitoring of VOCs (volatile organic compounds) in inert gas or air. The output voltage signal is scaled 0-10V for 0 to 6000ppm ISO-Butene (optional 4-20mA output available). Mounted directly into the circulation piping using the standard KF40 flange.

Analyzers Options

PART NUMBER	NAME	DESCRIPTION
1500668	MB-DISPLAY	Digital read out for OX-SE1 / MO -SE1, power supply and interface for SSD sensors. - Alarms settings on the front panel - 25-pin SUB-D interface
1500664	MB-GSU	Gas Sampling Unit, two channels, supplies SSD probes with "to be measured gas" out of non-flowing gas volumes, for systems without circulation unit.

We integrate our analyzers to our PLC for our new systems, but for existing systems or your existing equipment, you can use our analyzers in combination with our MB-DISPLAY and our Gas Sampling Unit (GSU).



MB-DISPLAY



MB-GSU



Freezer

PART NUMBER	NAME	DESCRIPTION
1500334	MB-GS-35 DIN R	Freezer (box integrated) from +10°C to min. -35°C Door hinge right Position: left sidewall Volume: 18 liters Incl. 3 pcs. of shelves
1500335	MB-GS-35 DIN L	Freezer (box integrated) from +10°C to min. -35°C Door hinge left Position: right sidewall Volume: 18 liters Incl. 3 pcs. of shelves
1500336	MB-GS-35 DIN RW	Freezer (box integrated) from +10°C to min. -35°C Door hinge left or right according to system spec. Position: rear wall Volume: 18 liters Incl. 3 pcs. of shelves
1500354	MB-GS-40 DIN R	Freezer (box integrated) Door hinge right From 0°C to min. -40°C Position: left sidewall Volume: 27 liters Incl. 3 pcs. of shelves
1500355	MB-GS-40 DIN L	Freezer (box integrated) Door hinge left From 0°C to min. -40°C Position: right sidewall Volume: 27 liters Incl. 3 pcs. of shelves



Atmosphere Cooling Units

PART NUMBER	NAME	DESCRIPTION
1500900	MB-RCC 1000	Recirculation chiller for M. Braun systems Temperature range +5 bis +30°C (Setting range); Accuracy +/-1K Cooling capacity: 1000 W @ 30°C (ambient temperature) Flow rate (cooling fluid) up to 12 l/min Dimensions: 375x500x570 mm (WxDxH)
1500152	Heat exchanger for Unilab	For the integration in the gas pipework to the UNILAB glovebox inside the gas purifier unit. The working gas will be cooled effectively through this device; thus the temperature inside the glovebox remains comfortable for the operator. Required water flow rate: 3-5 l/min; Rated cooling power: approx. 800 W
Box cooling		
1500328	MB-RKI-80	Cooling unit for tempering the box atmosphere Mounted at box ceiling Capacity: 0,95 kW Control unit integrated in PLC of gas purifier Available in standalone version for Labstar and UNIlab (1500350)
1500329	MB-RKI-200	Cooling unit for tempering the box atmosphere Mounted at box ceiling Capacity: 2,30 kW Control unit integrated in PLC of gas purifier. (Please note: requires glovebox with minimum width of 1500 mm) Available in standalone version for Labstar and UNIlab (1500351)



Recirculation chiller



Box cooling MB-RKI-200

Purge Box Units

PART NUMBER	NAME	DESCRIPTION
1500306	MB-BS-200	Unit for inerting (purging) of the workspace with inertgas Operation: via operation panel of the gas purifier. Valves PLC-controlled Flow rate: max. 200 l/min; incl. manual regulation valve for reduction of the gas flow Functions: - Purging ON / OFF
1500307	MB-BS-500	Unit for inerting (purging) of the workspace with inertgas Operation: via operation panel of the gas purifier. Valves PLC-controlled Flow rate: max. 500 l/min; incl. manual regulation valve for reduction of the gas flow Functions: - Purging ON / OFF
1500311	MB-BS-O2-UNIlab	Additional function for MB-BS-200; The purge function is automatically activated, as soon as the O2 set-point in the glovebox is exceeded (range 10-999 ppm). When the O2 value falls below the threshold the circulation of the gas purifier will be automatically restarted.
1500312	MB-BS-Auto LM/MOD	Additional function for MB-BS-200; The purge function is automatically activated, as soon as the O2 set point in the glovebox is exceeded (range 10-999 ppm). When the O2 rate falls below the threshold the circulation of the gas purifier will be automatically restarted. Automatic timer function for regular gas purge (for example, purging with argon to reduce the N2 concentration); Day selection with the time and duration of purging can be adjusted.
1500310	MB-BS-500-PLC	Automatic box purging system. The purging system starts if a max. level (adjustable between 10 and 100ppm) is achieved. After a reduction of the O2 level below the set point the circulation of the gas purifier will be restarted. If no O2-% sensor is used, the inertisation (purging) during start up is not monitored. Reaching an O2-level below 100ppm the circulation of the gas purifier will be started automatically. An optional O2-% sensor allows a fully monitored inertisation. Flow rate: max. 500 l/min; incl. manual regulation valve for reduction of the gas flow Functions: - Purging ON / OFF - Automatic purge start at defined O2 level

Vacuum Pumps

PART NUMBER	NAME	DESCRIPTION
Included into Standard workstations and gas purifier units		
1502007	Vacuum-rotary pump, RV 12, 110 - 240 V complete with oil mist trap, gas ballast, cable	
Upgrade for scroll vacuum pumps		
1502003	MB-Upgrade scroll vacuum pump: Additional charge for Dry Scroll vacuum pump for all M. Braun system with standard oil-sealed vacuum pump RV12	



EDWARDS RV12

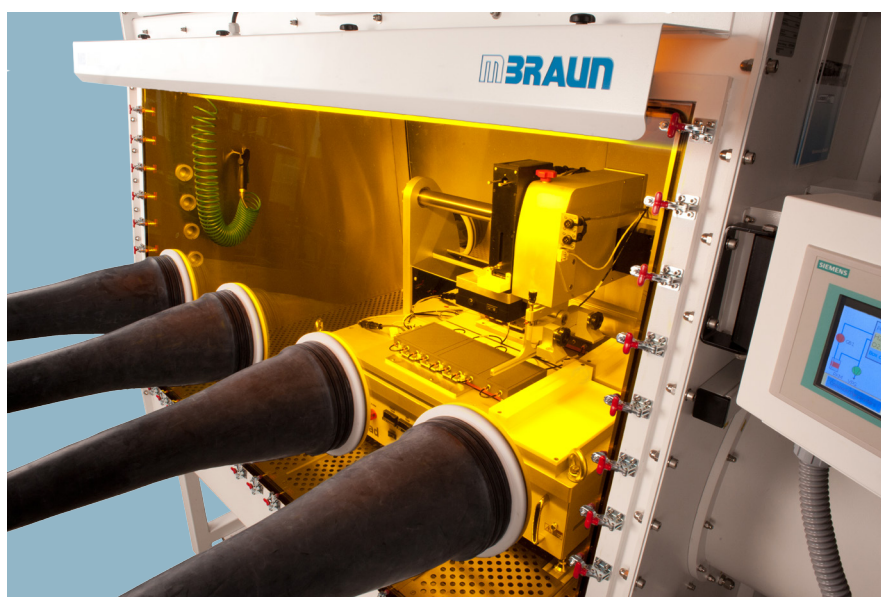


Optional: EDWARDS nXDS10i

Windows Upgrades

PART NUMBER	NAME	DESCRIPTION
Upgrade for safety glass windows		
1502040	MB-upgrade window (1250)	ONLY valid for new systems, up to width of 1250 mm Upgrade for system with polycarbonate window replaced by laminated safety glass
1502041	MB-upgrade window (1500)	ONLY valid for new systems, up to width of 1500 mm Upgrade for system with polycarbonate window replaced by laminated safety glass
1502042	MB-upgrade window (2000)	ONLY valid for new systems, up to width of 2000 mm Upgrade for system with polycarbonate window replaced by laminated safety glass
Upgrade for UV-cut windows		
1502030	MB-upgrade UV-cut (1250)	ONLY valid for new systems, up to width of 1250 mm Upgrade for UV-cut on glovebox window, UV-cut @ 360nm > 99%
1502031	MB-upgrade UV-cut (1500)	ONLY valid for new systems, up to width of 1500 mm Upgrade for UV-cut on glovebox window, UV-cut @ 360nm > 99%
1502032	MB-upgrade UV-cut (2000)	ONLY valid for new systems, up to width of 2000 mm Upgrade for UV-cut on glovebox window, UV-cut @ 360nm > 99%
Upgrade for anti-static windows		
1502035	MB-upgrade AS-window (1250)	ONLY valid for new systems, up to width of 1250 mm Upgrade for anti-static window, Material: Polycarbonate
1502036	MB-upgrade AS-window (1500)	ONLY valid for new systems, up to width of 1500 mm Upgrade for anti-static window, Material: Polycarbonate
1502037	MB-upgrade AS-window (2000)	ONLY valid for new systems, up to width of 2000 mm Upgrade for anti-static window, Material: Polycarbonate
Upgrade for quick-release windows		
1500338	MB-QC-1250	Window-frame with QC-quick connectors (quick-release). For standard windows up to 1250 mm length. Only available for LABmaster and MOD-Glovebox Systems.
1500338	MB-QC-1500	Window-frame with QC-quick connectors (quick-release). For standard windows up to 1500 mm length. Only available for LABmaster and MOD-Glovebox Systems.
1500340	MB-QC-1800	Window-frame with QC-quick connectors (quick-release). For standard windows up to 1800 mm length. Only available for LABmaster and MOD-Glovebox Systems.
1500341	MB-QC-2000	Window-frame with QC-quick connectors (quick-release). For standard windows up to 2000 mm length. Only available for LABmaster and MOD-Glovebox Systems.

The systems are build as a standard with polycarbonate window(s) with SAPHIR hard coating (resistant to many chemicals and scratches).



UV-cut window with Quick Connectors (QC)

Standard Ovens

PART NUMBER	NAME	DESCRIPTION
150°C Vacuum ovens		
1500235	MB-OR-H-V-150°-390	Vacuum furnace, temperature range up to 150°C, cylindrical, diam.. = 390 mm, incl. temperature controller. Horizontal, box panel right side. Temperature profiles, -ramps: no. Additional cooling: no. Operation: through a separate control unit.
1500236	MB-OL-H-V-150°-390	Vacuum furnace, temperature range up to 150°C, cylindrical, diam.. = 390 mm, incl. temperature controller. Horizontal, box panel left side. Temperature profiles, -ramps: no. Additional cooling: no. Operation: through a separate control unit.
1500237	MB-VOH-MINI-150°-R	Mini-antechamber oven, up to max. 150°C, installed on the right side wall; diameter 150 mm, length 400mm. Type: 100% outside the box; Cover: bayonet mechanism inside and outside. Antechamber function: manual, 3 way valve for evacuation and venting of the antechamber; including stainless steel extension tray.
1500238	MB-VOH-MINI-150°-L	Mini-antechamber oven, up to max. 150°C, installed on the left side wall; diameter 150 mm, length 400mm. Type: 100% outside the box; Cover: bayonet mechanism inside and outside. Antechamber function: manual, 3 way valve for evacuation and venting of the antechamber; including stainless steel extension tray.
250°C Vacuum ovens		
1500233	MB-OR-H-V-250°-390-W	Vacuum furnace, temperature range up to 250°C, cylindrical, diam.. = 390 mm, PLC-controlled, incl. temperature controller. Horizontal, box panel right side. Power Supply: 400 V / 3 Ph / 5.5 kW. Cooling water must be supplied by customer. Inclusive vacuum pump: RV-12, oil-sealed
1500234	MB-OL-H-V-250°-390-W	Vacuum furnace, temperature range up to 250°C, cylindrical, diam.. = 390 mm, PLC-controlled, incl. temperature controller. Horizontal, box panel left side. Power Supply: 400 V / 3 Ph / 5.5 kW. Cooling water must be supplied by customer. Inclusive vacuum pump: RV-12, oil-sealed
600°C Vacuum ovens		
1500221	MB-OR-H-V-600°-390-W	Vacuum furnace, temperature range up to 600°C, cylindrical, diam.. = 390 mm, PLC-controlled, incl. temperature controller, horizontal, box panel right side. Power Supply: 400 V / 3 Ph / 4.5 kW. Cooling water must be supplied by customer. Inclusive vacuum pump: RV-12, oil-sealed
1500222	MB-OL-H-V-600°-390-W	Vacuum furnace, temperature range up to 600°C, cylindrical, diam.. = 390 mm, PLC-controlled, incl. temperature controller, horizontal, box panel left side. Power Supply: 400 V / 3 Ph / 4.5 kW. Cooling water must be supplied by customer. Inclusive vacuum pump: RV-12, oil-sealed
Miscellaneous ovens		
1504600	MB-Vakuumofen VC 20	Laboratory vacuum oven for the use in M. Braun gloveboxes. Inside dimensions: 250x250x320 mm (WxHxD) Outside dimensions: 545x375x425 mm (WxHxD) Max. temp. 200°C. Usable volume: 20 liter Vacuum supply through M. Braun gas purifier (only if installed; otherwise a dedicated vacuum pump is requested but not included in this item) Please add the part 1504601 for its integration
1500240	MB-LABoven	400°C Oven, Glovebox Integrated Designed for integration to MBraun glovebox Max temperature up to 400° C, with water cooled flange Can be mounted to side or back wall. Low particle design with smooth internal walls for easy cleaning. Digital temperature PID controller (1°C accuracy) Used shelves space: 150x150x150 mm (W*H*D)



Mini vacuum oven 150°C



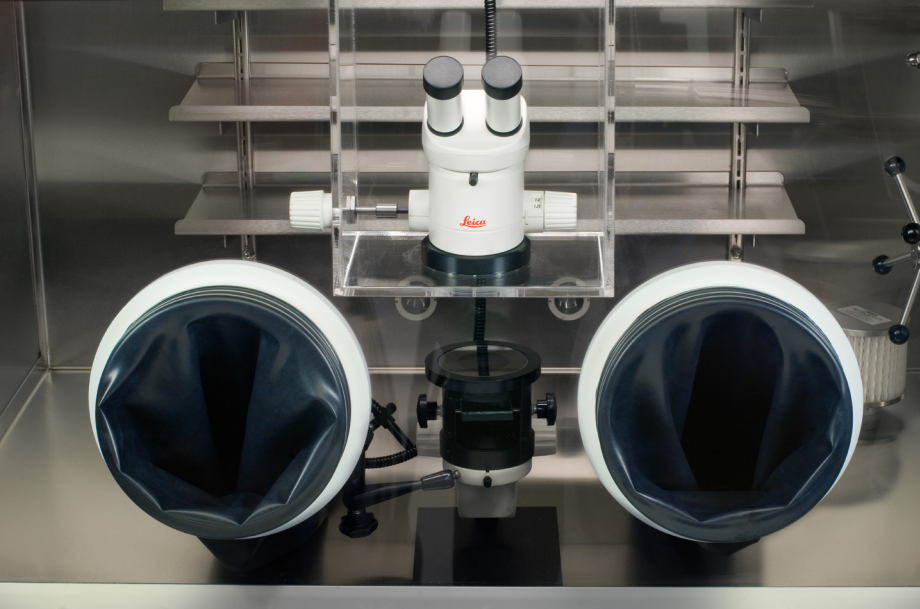
Vacuum oven 250°C



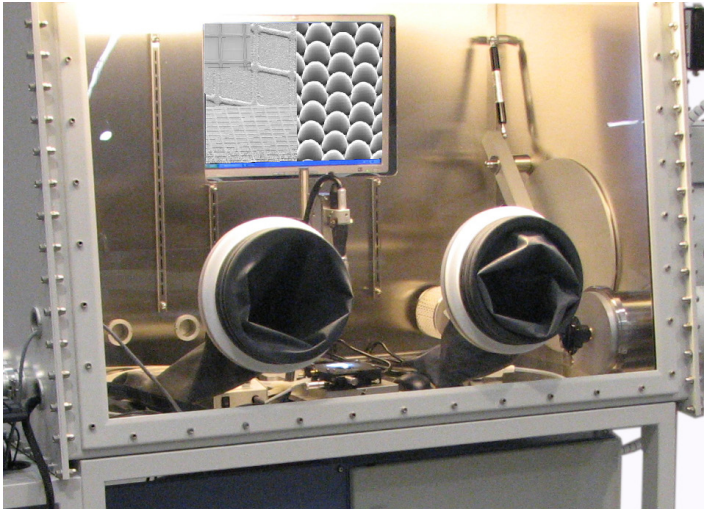
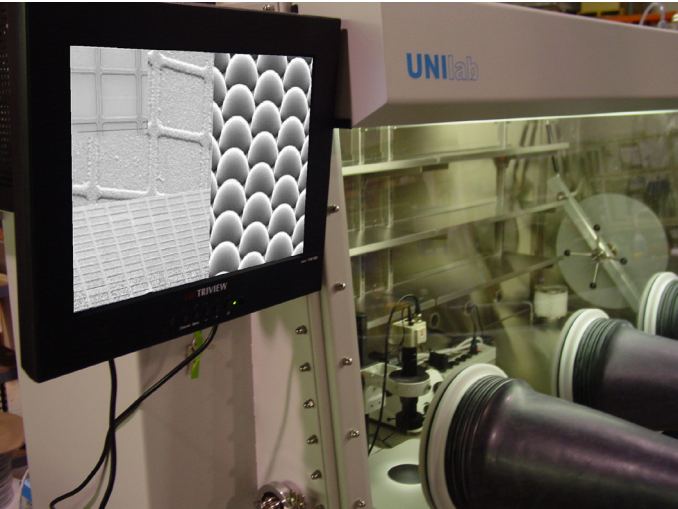
Vacuum oven 600°C

Microscopes

PART NUMBER	NAME	DESCRIPTION
1500375	Microscope Leica S4E	Complete Stereo microscope S4E for the integration in M. Braun gloveboxes / windows.
1500376	Microscope Leica M60	Complete Stereo microscope M60 for the integration in M. Braun gloveboxes / windows.
1580380	MB-MSK-IC80HD	Compact, integrated high-definition stereo microscope camera for professional visualization and documentation.



Examples of microscopes integration with display:



Cold Well

FOR COOLING WITH LIQUID NITROGEN (LN2)

PART NUMBER	NAME	DESCRIPTION
1500584	MB-cold well	Incl. Dewar Diameter inner cylinder: 150 mm Height inner cylinder: 180 mm Incl. holding clamps for dewar Incl. internal cover



PART NUMBER	NAME	DESCRIPTION
Partition walls		
1502010	Partition wall 780-390	Partition wall for separation of 2 boxes with depth of 780 mm; incl. door, diameter 390 mm
1502011	Partition wall 1000-390	Partition wall for separation of 2 boxes with depth of 1000 mm; incl. door, diameter 390 mm
1502012	Partition wall 1200-390	Partition wall for separation of 2 boxes with depth of 1200 mm; incl. door, diameter 390 mm
Piping for partition walls		
1502004	MB-2 box piping AND/OR	Special circulation piping for supply of 2 gloveboxes with one gas purification system Operation: a) B1 and B2 in common gas circulation („AND“) b) B1 or B2 in alternate gas circulation („OR“) Gas inlet and outlet with electro-pneumatic valves Complete PLC-controlled / operation on touch panel
1502014	MB-2 box piping AND/OR, manual	Special circulation piping for supply of 2 gloveboxes with one gas purification system Operation: a) B1 and B2 in common gas circulation (“AND”) b) B1 or B2 in alternate gas circulation (“OR”) Gas inlet and outlet with manual valves.

Partition Walls



Dust Cleaners

PART NUMBER	NAME	DESCRIPTION
1500596	MB-Easyclean-BL08	Dust cleaner for cleaning of MB-Gloveboxes and removal of particles / dust Filter unit will be mounted inside the glove box Blower (gas tight) for suction of the particles with a through put of about 22m ³ /h; HEPA filter in a container; Flexible hose with cleaning jet Stand alone version not integrated in PLC
1500597	MB-Easyclean-BL01	Dust cleaner for cleaning of MB-Gloveboxes and removal of particles / dust Filter unit will be mounted inside the glovebox Main components: Blower (gas tight) for suction of the particles with a through put of about 88m ³ /h; HEPA filter in container; Flexible hose with cleaning jet Stand alone version not integrated in PLC
1500598	MB-Easyclean-BL01_ext	Dust cleaner for cleaning of MB-Gloveboxes and removal of particles / dust Filter unit will be mounted outside the glovebox Valves for filter exchange: isolation of filter housing from glovebox and inertisation of filter housing after exchange. Main components: Blower (gas tight) for suction of the particles with a through put of about 84 m ³ /h HEPA filter in gas tight container; Hand valves for closing the pipes during filter exchange; Flexible hose with cleaning jet System is integrated in the PLC of the glovebox system.



MB-Easyclean-BL08

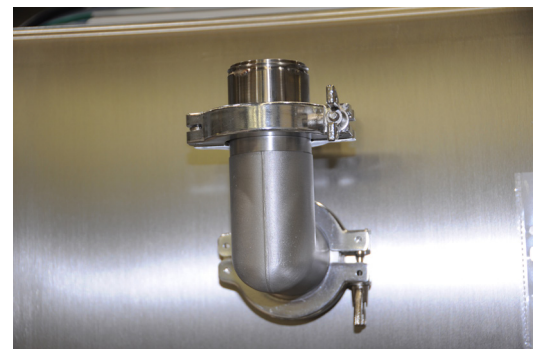


MB-Easyclean-BL01_ext

Safety accessories



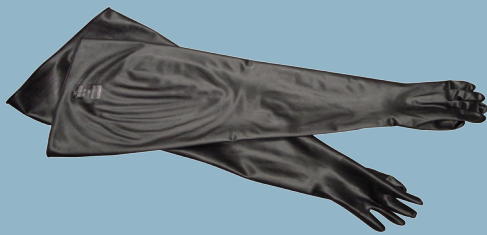
Light barrier



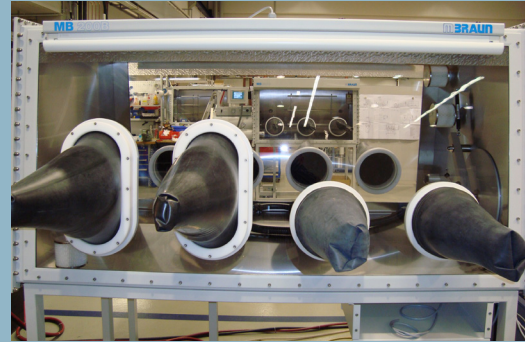
Overpressure valve

Gloves and Ports

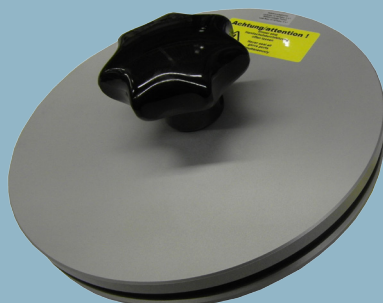
PART NUMBER	DESCRIPTION
2600593	Gloves, Butyl, 0,4 mm, size L, 186 diam., anatomical
2600598	Gloves, Butyl, 0.4 mm, size L, 186 diam., ambidextrous
3000047	Gloves, Butyl, 0.4 mm, size L, 220 diam., anatomical
3240567	Gloves, Butyl, 0.4 mm, size L, 220 diam., ambidextrous
3000018	Gloves, Butyl, 0.4 mm, size M, 220 diam., anatomical
3240568	Gloves, Butyl, 0.4 mm, size M, 220 diam., anatomical
3000019	Gloves, Butyl, 0.8 mm, size M, 220 diam., anatomical
3005009	Gloves, Hypalon, 0.4 mm, size L, 220 diam., ambidextrous 7057616 7057616
3005008	Gloves, Butyl, 0.4 mm, size L, oval, ambidextrous
2600147	Gloves, Hypalon, 0.8 mm, size L, 220 diam., anatomical
9002371	Internal glove-port cover, diam. 220 mm
7019882	External glove-port cover, diam. 220 mm
7070842	Glove-port feedthrough, diam. 220 mm
7057616	Glove-port feedthrough, diam. 220 mm; Aluminum
7041044	Glove-port feedthrough, oval



Pair of gloves, Butyl



Glove-port feedthrough, round and oval



Internal glove-port cover



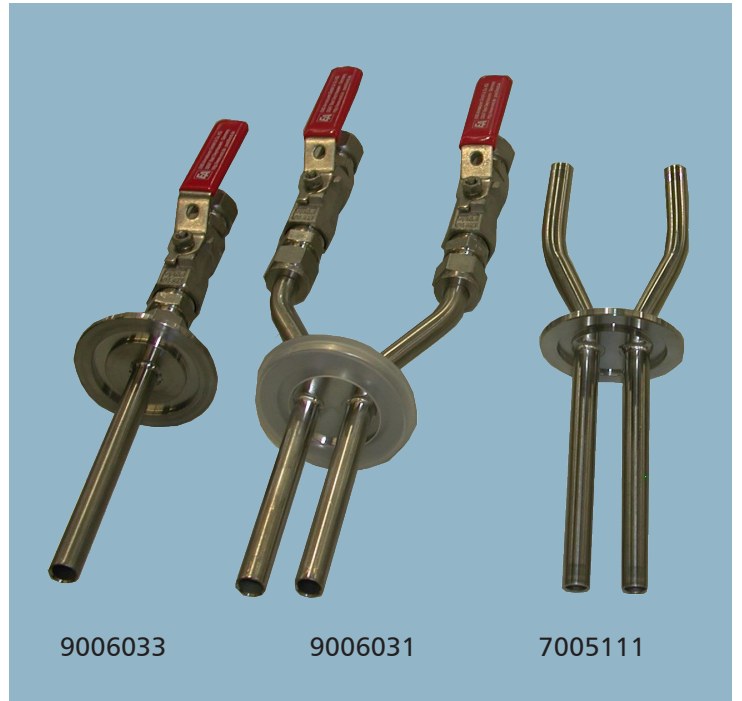
External glove-port cover

Feedthroughs

PART NUMBER	NAME	DESCRIPTION
Liquid/vacuum feedthroughs		
7005115	MB-MD-S8	Single feedthrough DN8 (10x1 tube), for DN40 flange; Stainless Steel
7005111	MB-MD-D8	Double feedthrough DN8 (10x1 tube), for DN40 flange; Stainless steel
9006033	MB-MDK-S8	Single feedthrough DN8 (10x1 tube) with manual ball valve, for DN 40 flange; Stainless Steel
9006031	MB-MDK-D8	Double feedthrough DN8 (10x1 tube) with manual ball valve, for DN 40 flange; Stainless Steel
Bulkhead feedthrough (no DN40 flange required)		
7021456	MB-BULKHEAD-DN2	Bulkhead Feedthrough stainless steel outside diameter 4mm (DN2)
7002254	MB-BULKHEAD-DN4	Bulkhead Feedthrough stainless steel outside diameter 6mm (DN4)
7022769	MB-BULKHEAD-DN6	Bulkhead Feedthrough stainless steel outside diameter 8mm (DN6)
9002482	MB-BULKHEAD-DN8	Bulkhead Feedthrough stainless steel outside diameter 10mm (DN8)
7011154	MB-BULKHEAD-DN10	Bulkhead Feedthrough stainless steel outside diameter 12mm (DN10)
7106821	MB-BULKHEAD-3/8"	Bulkhead Feedthrough stainless steel outside diameter 3/8"
Electrical feedthrough		
1500439	MB-ED-220(115)/1Ph/16	Power feedthrough, 230V(115V)/1ph/16A; Outside 3,5m, inside 1,5m; Sockets not included
1500440	MB-ED-400/16/3Ph	400V, 3 ph, 16A, moulded cable for DN40 flange, 3.5 m length
1500441	MB-ED-400/25/3Ph	400V, 3 ph, 25A, moulded cable for DN40 flange, 3.5 m length
1500442	MB-ED-400/25/3Ph	115V, 1 ph, 24A, moulded cable for DN40 flange, 3.5 m length
1500443	MB-ED-208/20/3Ph	208V, 3 ph, 20A, moulded cable for DN40 flange, 3.5 m length
1500438	MB-sealing cable	Customized molded cable, max. 5 wires
Cable feedthroughs		
1500432	MB-Cable feedthrough_4 pole	Low voltage feedthrough, 0-10V, moulded cable for DN40 flange, 3.5 m length
1500433	MB-Cable feedthrough_12 pole	Low current feedthrough, 0-20mA, moulded cable for DN40 flange, 3.5 m length
1500434	MB-Cable feedthrough_36 pole	Low current feedthrough, 0-20mA, moulded cable for DN40 flange, 3.5 m length
Signal feedthrough		
1500465	BNC/12 pin/double sided/50 Ohm	BNC feedthrough, 12 pin, double sided, for ISO-K 100 flange
1500695	BANANA/1 pin/double sided	BANANA feedthrough, 1 pin, double sided, for mounting through box wall
1500460	BNC/4 pin/double sided/DN40	BNC feedthrough, 4 pin, double sided, for DN40 flange, Frequency range: up to 10 MHz
1500461	BNC/2 pin/double sided/DN40	BNC feedthrough, 2 pin, double sided, for DN40 flange, Frequency range: up to 10 MHz
1500437	BANANA/2 pin/double sided/DN40	BANANA feedthrough, 2 pin, double sided, for DN40 flange
1500696	BANANA/4 pin/double sided/DN40	BANANA feedthrough, 4 pin, double sided, for DN40 flange
1500462	BNC/4 pin/double sided/DN40/50 Ohm	BNC feedthrough, 4 pin, double sided, for DN40 flange, 50 Ohm for HF application
1500463	BNC/2 pin/double sided/DN40/50 Ohm	BNC feedthrough, 2 pin, double sided, for DN40 flange, 50 Ohm for HF application
1500464	BNC/4 pin/double sided/DN40/75 Ohm	BNC feedthrough, 4 pin, double sided, for DN40 flange, 50 Ohm for HF application
Special cable feedthroughs		
1500444	MB-USB feedthrough	USB cable feedthrough, 1.8 m (inside plug: standard B-male, Outside plug: standard A-male)
1500445	MB-USB feedthrough	USB cable feedthrough, 5 m (inside plug: standard A-female, Outside plug: standard A-male)
1500450	RS232/feedthrough	RS 232 feedthrough, 2m
1500438	Sealing of customer supplied cables	MB-sealing cable
1500452	Ethernet feedthrough, 2 x socket RJ45	Ethernet feedthrough, 2 x socket RJ45



Special feedthroughs for equipment integration



Examples of specific feedthroughs also available:



Media feedthroughs with specific length



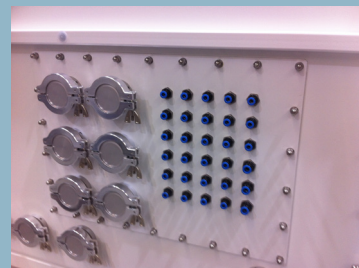
Sub-D 25 mounted on ISO-CF Flanges



Copper bars for high-current devices



Glovebox rear wall with flanges and windows



Pneumatic feedthroughs and DN40 flanges mounted on a removable plate

Flanges

PART NUMBER	DESCRIPTION
Single-sided KF flanges	
1501300	DN40 KF, Aluminum
1501301	DN40 KF, Stainless Steel
1501302	DN50 KF, Stainless Steel
1501303	DN40 KF , Filter Flange Stainless Steel
1501304	DN40 KF , Filter Flange Aluminum
Double-sided KF flanges	
1501305	DN16 KF, Stainless Steel
1501306	DN25 KF, Stainless Steel
1501307	DN40 KF, Aluminum
1501308	DN40 KF, Stainless Steel
1501309	DN50 KF, Stainless Steel
O-K and ISO-CF flanges (single-sided, welded in box)	
1500724	DN100 ISO-K, Stainless Steel
1500726	DN200 ISO-CF, Stainless Steel
1500727	DN100 ISO-CF, Stainless Steel
1500721	DN160 ISO-K, Stainless Steel
1500722	DN63 ISO-K, Stainless Steel
1500723	DN160 ISO-CF, Stainless Steel
1500728	DN63 ISO-CF, Stainless Steel
KF accessories	
7015946	DN40 KF Kit ; Stainless Steel
7012170	DN40 KF Kit ; Aluminum
7002425	DN40 KF; blind cover; Stainless Steel
7000607	DN40 KF; blind cover; Aluminum
7015978	DN25 KF Kit ; Stainless Steel
7010982	DN25 KF; blind cover; Stainless Steel



Filters Loadings and Main Spare Parts

PART NUMBER	DESCRIPTION
2600793	Valve-set
9002531-K	Molecular sieve for purifier loading and regenerable solvent filter
9002043	Activated carbon for solvent filter



Cu-Catalyst

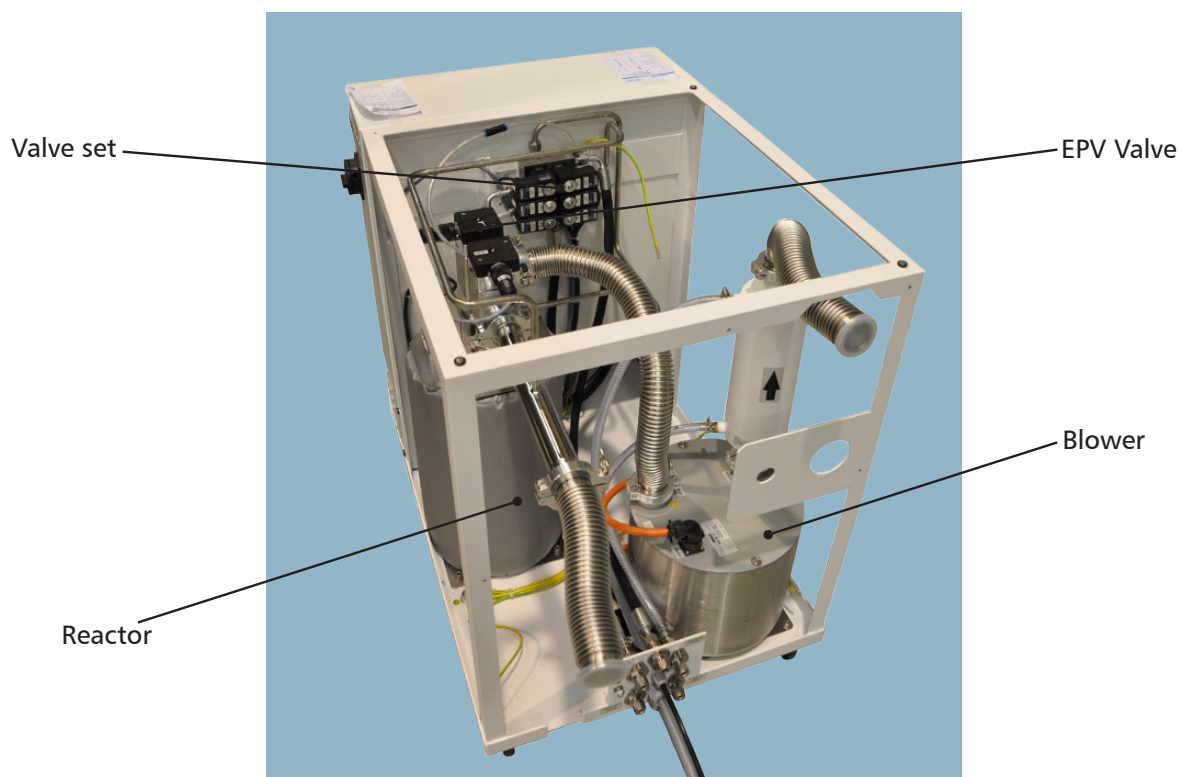


Molecular sieve



Activated carbon

PART NUMBER	DESCRIPTION
2600839	Valve-set
3240262	Valve EPV40 high vacuum, angle, Alu
2604519	Reactor with molecular sieve and copper catalysts
9002832	Blower MB-BL-01





M. Braun Inertgas-Systeme GmbH (Headquarters)
Dieselstr. 31 • D-85748 Garching • Germany
Phone: +49 89 32669-0 • Fax: +49 89 32669-105
Web: www.mbraun.de
E-Mail Sales: info@mbraun.de
E-Mail Service: service@mbraun.de

Germany



M. Braun Incorporated
14 Marin Way • Stratham, NH • 03885 • USA
Phone: +1 (603) 773 9333 • Fax: +1 (603) 773 0008
Web: www.mbraunusa.com
E-Mail Sales: info@mbraunusa.com
E-Mail Service: service@mbraunusa.com

USA



M. Braun Inertgas-Systems Korea Ltd.
B-309 • Gangseo Hangang Xi (zhai) Tower
1498, Gayang-dong • Gangseo-gu, Seoul, Korea
Tel: +82 2 3275 3537 • Fax: +82 2 2638 5080
Web: www.mbraun-glovebox.kr
E-mail: info@mbraun.asia

Korea



M. Braun UK & Ireland
Mansfield Business Centre • Ashfield Avenue
Mansfield • Nottinghamshire • NG18 2AE • UK
Phone: +44 1623 404329 • Fax: +44 1623 404277
Web: www.mbraun.co.uk
E-Mail: info@mbraun.de

UK & Ireland



M. Braun Inertgas Systems (Shanghai) Co., LTD
Ground floor of building #1 • No. 145 Jintang Road
Tangzhen, Pudong, Shanghai • 201201 • P.R.China
Phone: + 86 21 5032 02 57 • Fax: + 86 21 5032 02 29
Web: www.mbraunchina.com
E-Mail: info@mbraunchina.com

China



M. Braun France SAS
3, rue du Golf • Parc INNOLIN
33700 Mérignac • France
Tél.: +33 5 24 84 64 00 • Fax: +33 5 24 84 91 07
Web: www.mbraun.fr
E-Mail Sales: contact@mbraun.fr
E-Mail Service: service@mbraun.fr

France